

EXTRUDED ALUMINUM

Materials:

- Aluminum Alloy (6063 T-5)

ASTM Codes:

- ASTM C1063
- ASTM B244-97
- ASTM B136-84 (Color Anodizing)
- ASTM D4214-98 (Factory Paint)
- ASTM ND1730-67-TYPE B
(Chem-Film/Alodine coating)
- AA-M32-C10A21 (Clear Anodized)
- AAMA 605.2 (70% KYNAR
Baked-On Paint)

Note: Standard length is 10 feet.
Additional lengths available
upon request.



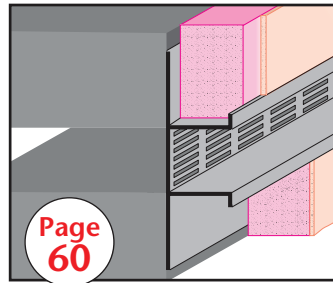
EXTRUDED ALUMINUM

Stockton Products' Extruded Aluminum

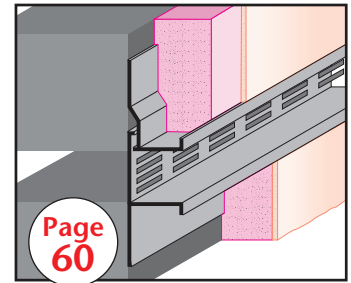
A comprehensive line of extruded aluminum products for drywall, plaster and stucco applications.

Can Be Curved

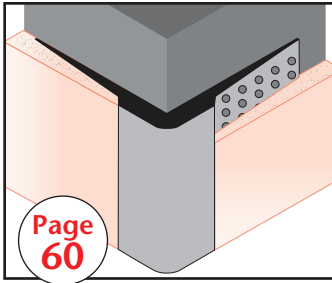
These products are designed so that they can be curved for installation. Gives you more options to create arched decorative reveals and more!



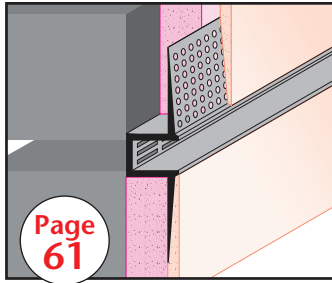
DCS:
Drywall Channel Screed



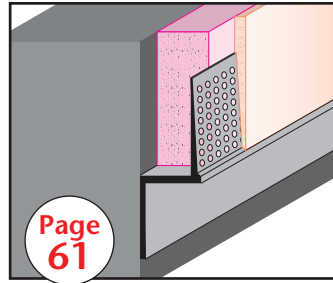
DCS 50-2: Drywall Channel
Screed 50-2 Piece



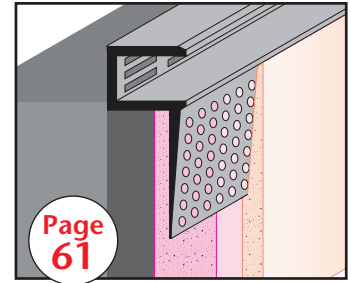
DMCT:
High Strength Corner Trim



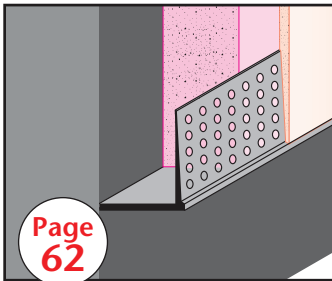
DRM:
Wall Reveal



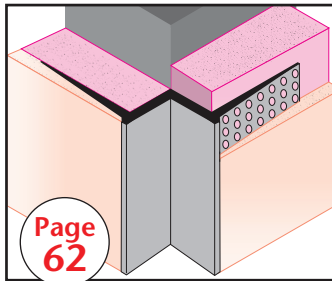
DRMB:
Reveal Base



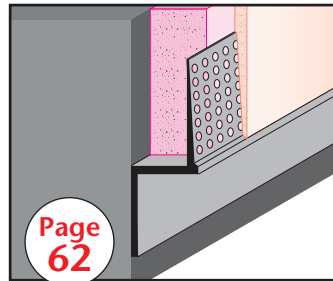
DRMF:
F Wall Reveal



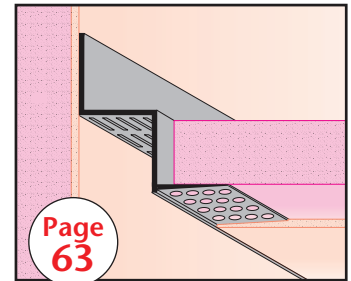
DRML:
Edge Trim



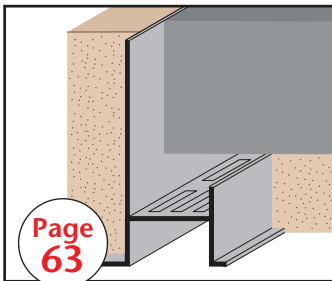
DRMW:
W Corner Reveal



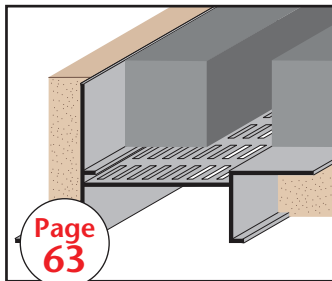
DRMZ:
Z Wall Reveal



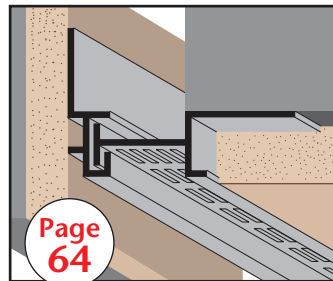
DRWT:
W Reveal



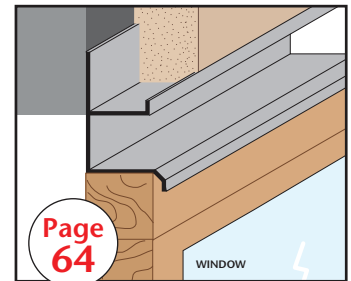
DS:
Drip Screed



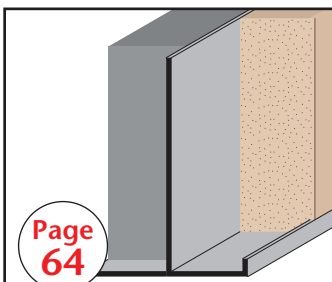
DS2
Drip Screed 2



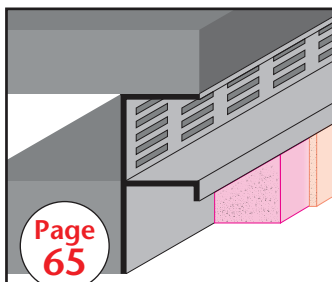
EES 75-100: Plaster Edge
Expansion Screed - 2 pc.



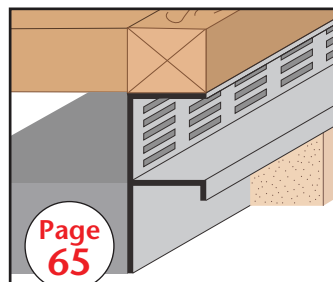
F-D 75-75:
F Drip Molding



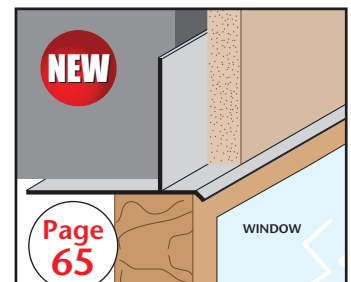
FCM:
Fascia Corner Molding



FDM:
F Drywall Molding



FPM:
F Plaster Molding



FRWDM: Facia/Recessed
Window Drip Molding

EXTRUDED ALUMINUM

KEY

PLASTER/
STUCCO

CONCRETE

PLYWOOD

WOOD

FOAM

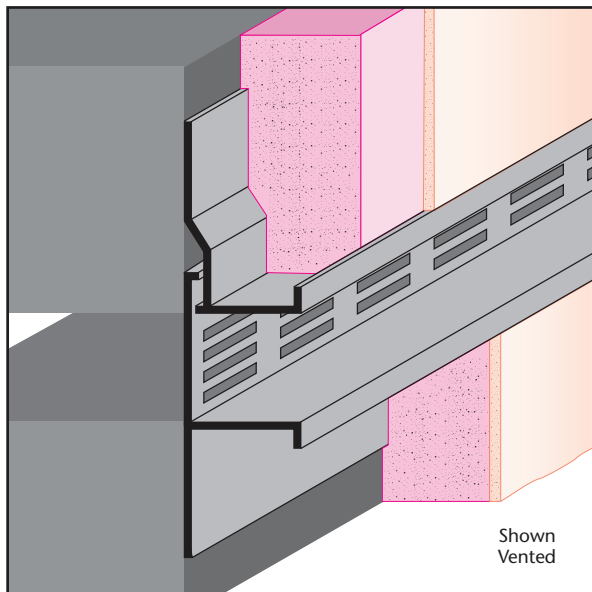
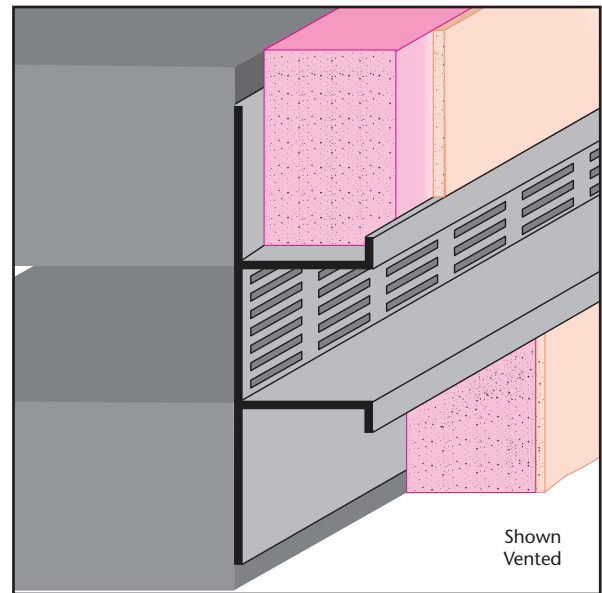
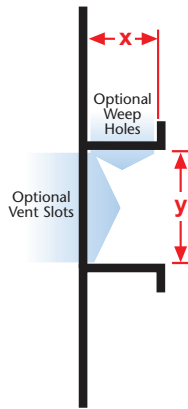
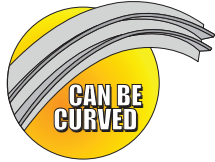
DCS: Drywall Channel Screed

- Available With 1/8" x 1" Vent Slots or No Vents

Drywall version of the plaster channel screed used to create a decorative reveal & to separate dissimilar materials. Used with one-coat stucco and direct applied systems. Available with 1/8" weep holes.

Length	X Size	Y Size
10'	1/2"	1/2"
	*5/8"	3/4"
		1"
		1 1/2"
		2"
		3"
		4"

*Not available with a 1 1/2" Y size.

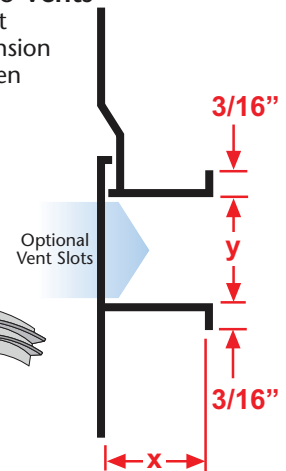
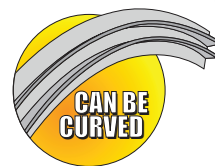


DCS 50-2: Drywall Channel Screed 50 - 2 pc.

- Available With 1/8" x 1" Vent Slots or No Vents

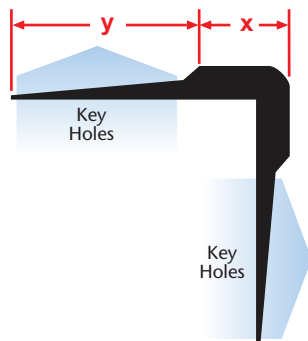
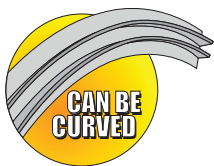
A two-piece version of the DCS series molding that provides 1/4" +/- movement where a "true" expansion joint is required. Used for stucco over block or when only a 1/2" depth is required.

Length	X Size	Y Size
10'	1/2"	1/4"
	3/4"	1/2"
		3/4"
		1"
		1 1/2"
		2"

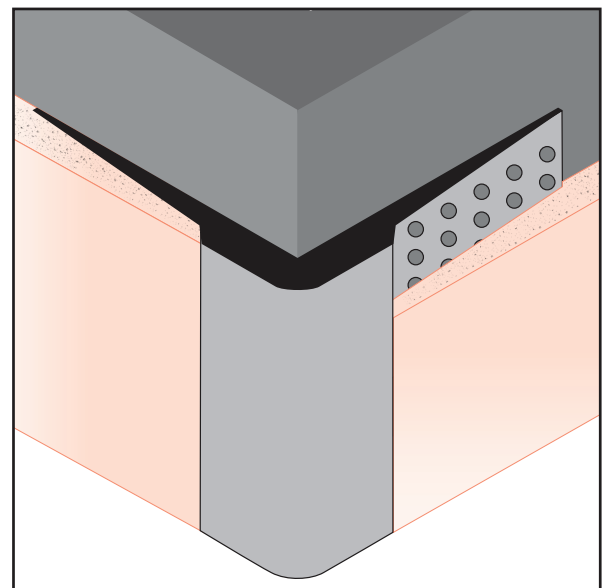


DMCT: High Strength Corner Trim

A 90° outside corner with taping flanges for drywall. Provides a high strength corner for high impact areas. Includes key holes for proper plaster adhesion.



Length	X Size	Y Size
10'	3/8"	7/8"

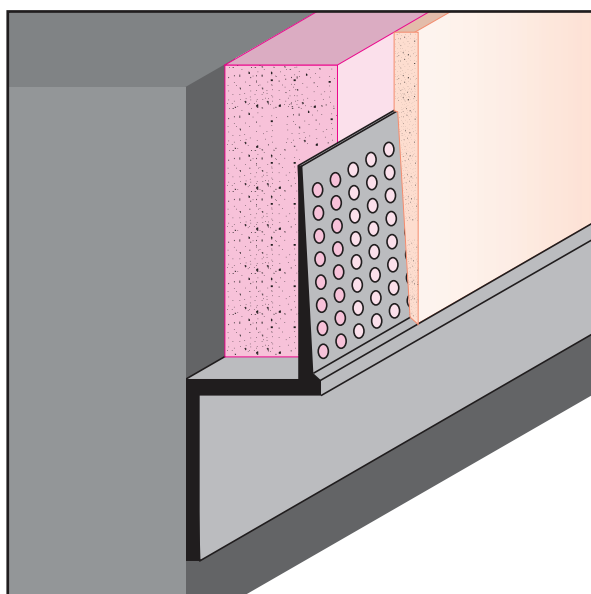
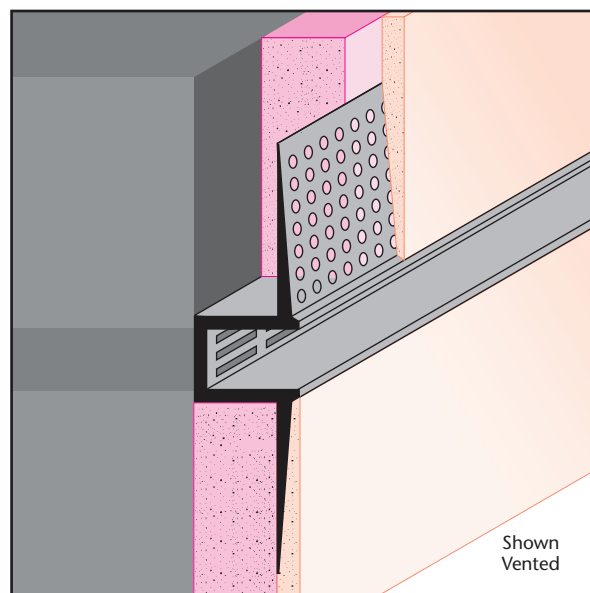
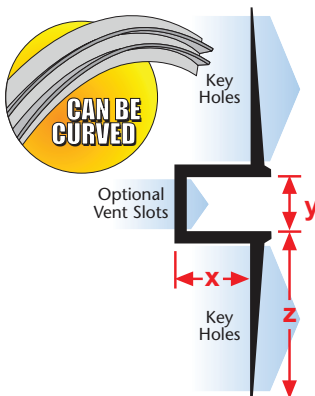


DRM: Wall Reveal

- Available With 1/8" x 1" Vent Slots or No Vents

A reveal molding with taping flanges that provides a decorative reveal in drywall. This molding is installed after the drywall board, greatly improving installation ease and time. Includes key holes for proper plaster adhesion.

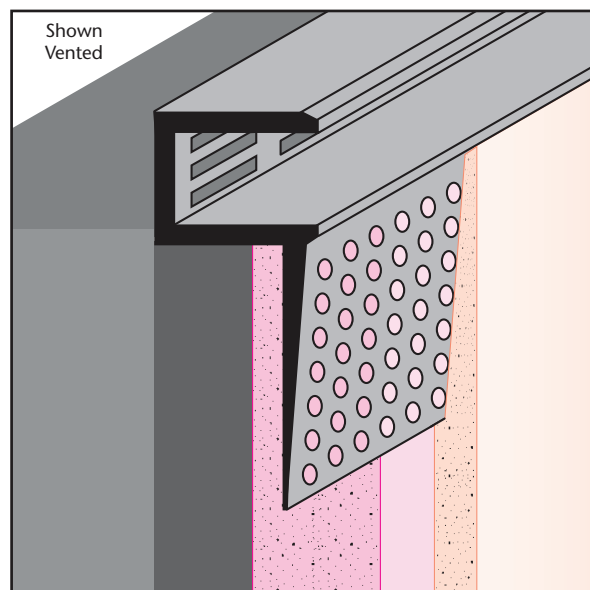
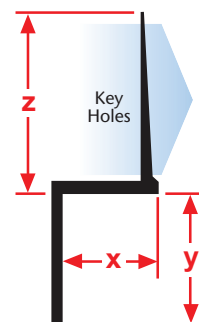
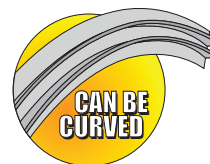
Length	X Size	Y Size	Z Size
10'	1/4"	1/8"	7/8"
	1/2"	1/4"	
	5/8"	3/8"	
		1/2"	
		5/8"	
		3/4"	
		1"	
		1 1/2"	
		2"	
		3"	



DRMB: Reveal Base

"Z" style with a taping flange that provides a reveal and a termination point for drywall. Includes key holes for proper plaster adhesion.

Length	X Size	Y Size	Z Size
10'	5/8"	1"	7/8"
		1 1/2"	
		2"	
		2 1/2"	
		3"	
		3 1/2"	
		4"	

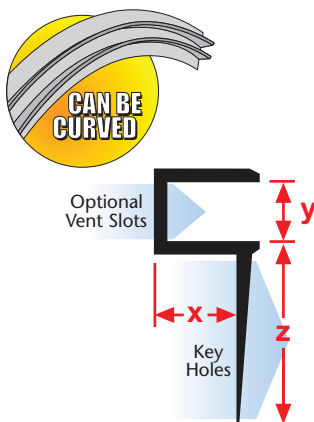


DRMF: F Wall Reveal

- Available With 1/8" x 1" Vent Slots or No Vents

"F" style with a taping flange that creates a reveal and board termination point at tops and bases of walls and at door and window frames. Includes key holes for proper plaster adhesion.

Length	X Size	Y Size	Z Size
10'	1/4"	1/8"	7/8"
	1/2"	1/4"	
	5/8"	3/8"	
		1/2"	
		5/8"	
		3/4"	
		1"	
		1 1/2"	
		2"	
		3"	



EXTRUDED ALUMINUM

KEY

PLASTER/
STUCCO

CONCRETE

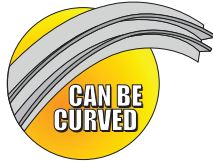
PLYWOOD

WOOD

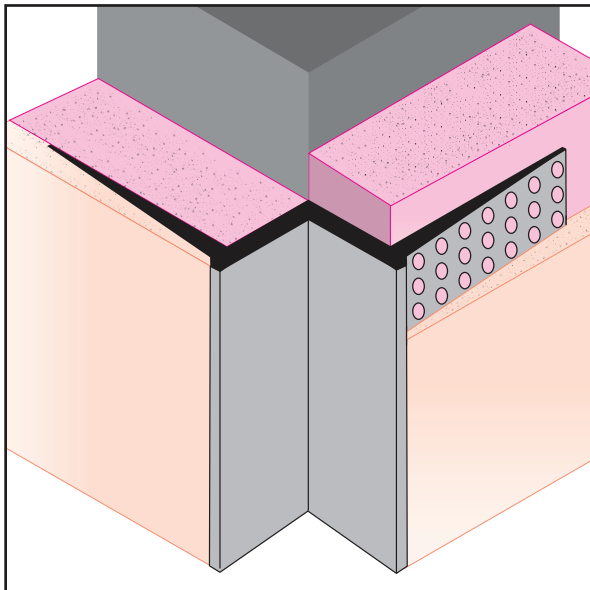
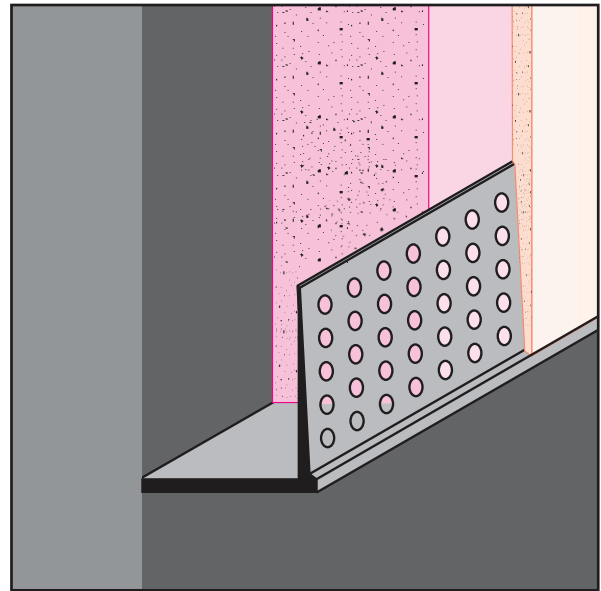
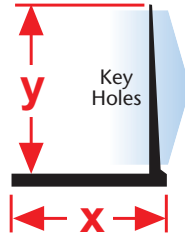
FOAM

DRML: Edge Trim

"L" style drywall molding with a taping flange that provides a drywall termination point by capping of the raw edge of the drywall board. Includes key holes for proper plaster adhesion.

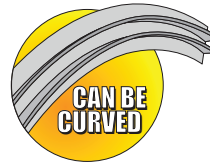


Length	X Size	Y Size
10'	1/2"	7/8"
	5/8"	
	3/4"	
	1"	
	1 1/2"	
	2"	
	3"	

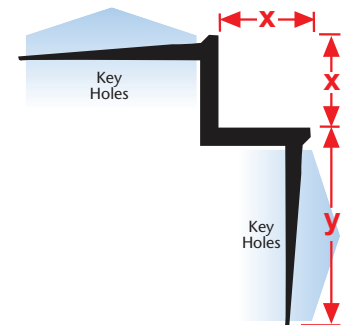


DRMW: W Corner Reveal

"W" style drywall molding with taping flanges that creates an inverted corner for setbacks, stepdowns and other special drywall conditions. Includes key holes for proper plaster adhesion.



Length	X Size	Y Size
10'	1/2"	7/8"
	5/8"	

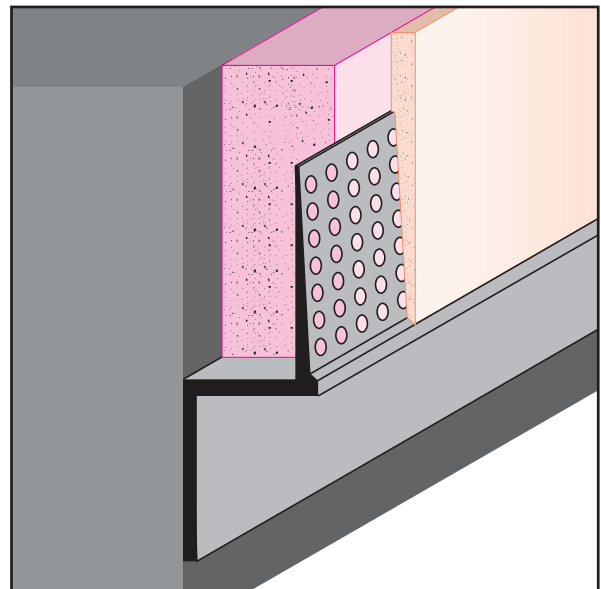
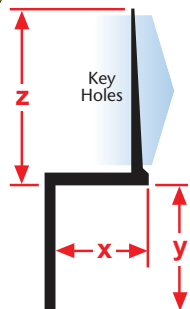
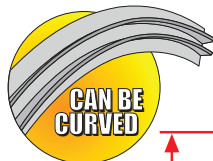


DRMZ: Z Wall Reveal

- Available With 1/8" x 1" Vent Slots or No Vents

"Z" style with a taping flange that provides a reveal and a termination point for drywall at door frames, windows and wall bases. Includes key holes for proper plaster adhesion.

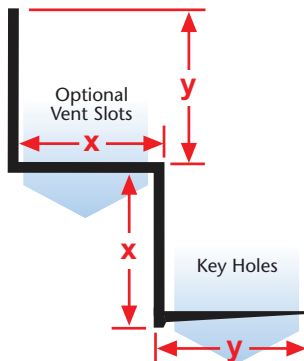
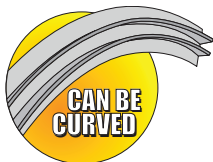
Length	X Size	Y Size	Z Size
10'	1/4"	1/8"	7/8"
	1/2"	1/4"	
	5/8"	3/8"	
		1/2"	
		5/8"	
		3/4"	
		1"	
		1 1/2"	
		2"	
		3"	
		4"	



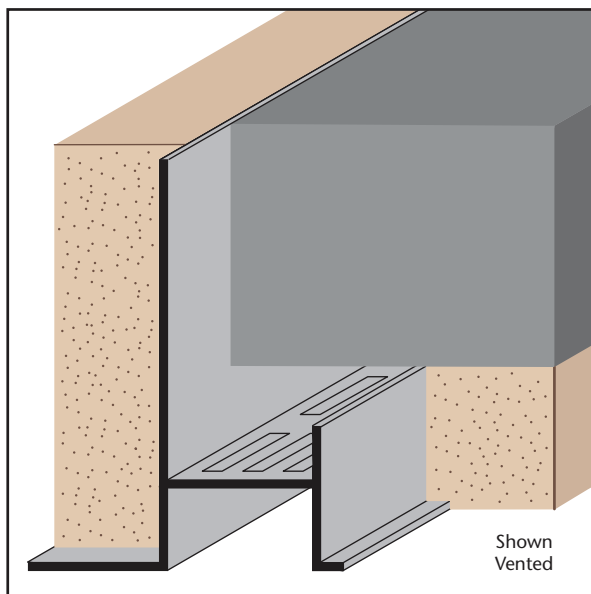
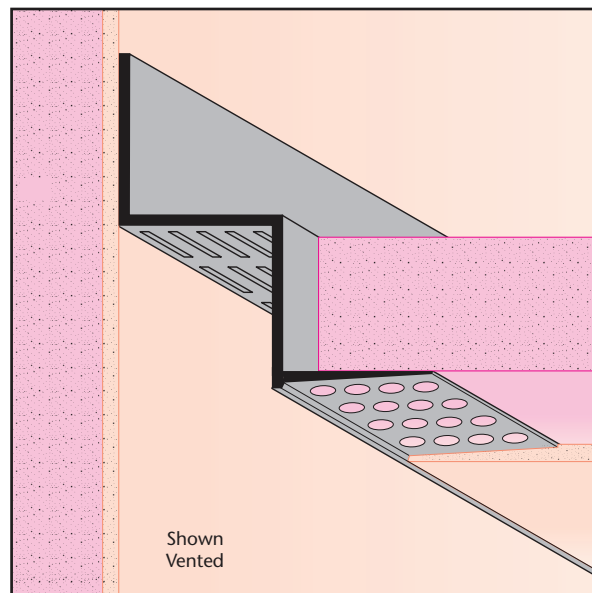
DRWT: "W" Reveal

- Available With Vents or No Vents

"W" style drywall molding with taping flange that creates a reveal at a wall/drywall ceiling condition. Includes key holes for proper plaster adhesion.



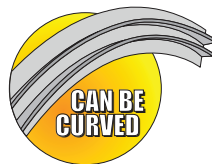
Length	X Size	Y Size
10'	3/4"	3/4"



DS: Drip Screed

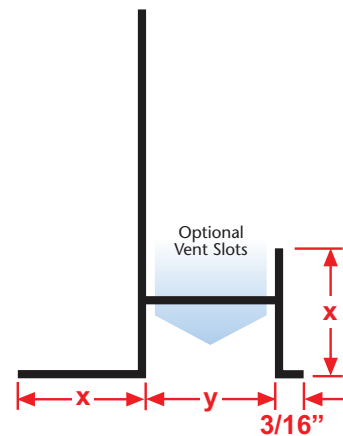
- Available With 1/8" x 1" Vent Slots or No Vents

An aesthetically pleasing drip screed for conventional 3-coat stucco that functions as a plaster stop/drip edge and creates a reveal at the fascia/soffit corner condition.



Length	X Size	Y Size
10'	7/8"	3/4"
		7/8"
		*2"
		3"

*2" not available vented.

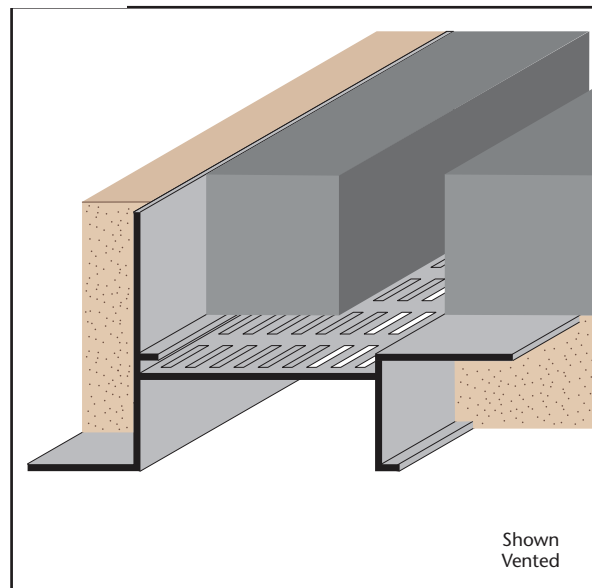
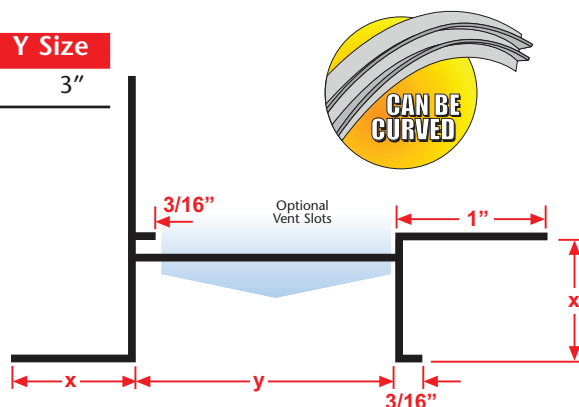


DS300: Drip Screed 3" Reveal

- Available With 1/8" x 1" Vent Slots or No Vents

An aesthetically pleasing drip screed for conventional 3-coat stucco that functions as a plaster stop/drip edge and creates a reveal at the fascia/soffit corner condition.

Length	X Size	Y Size
10'	7/8"	3"



EXTRUDED ALUMINUM

KEY

PLASTER/
STUCCO

CONCRETE

PLYWOOD

WOOD

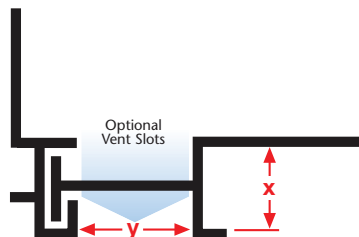
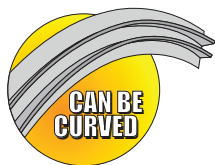
FOAM

EES 75-100 2PC:

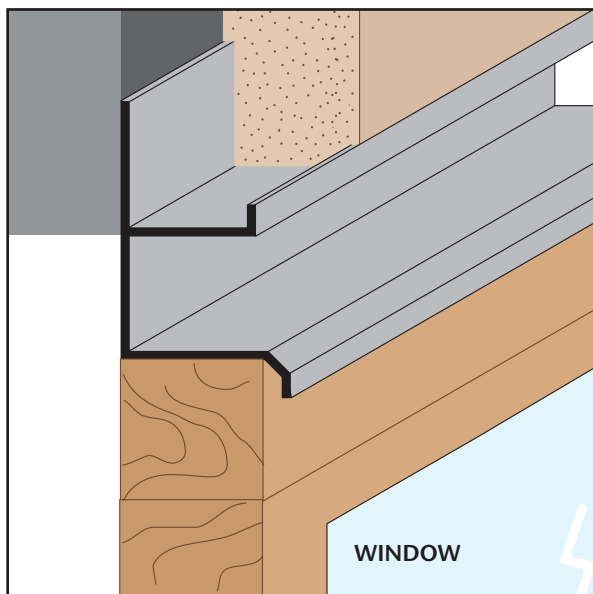
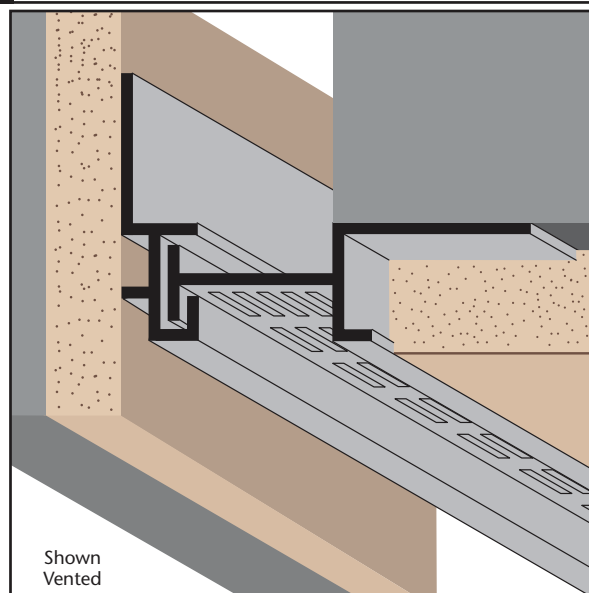
Plaster Edge Expansion Screed - 2 pc.

- Available With 1/8" x 1" Vent Slots or No Vents

A 2-piece plaster control screed that permits movement in a plaster soffit/wall condition.

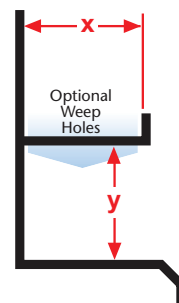
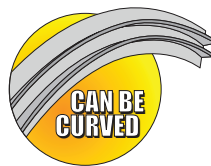


Length	X Size	Y Size
10'	3/4"	1"



F-D 75-75: F Drip Molding

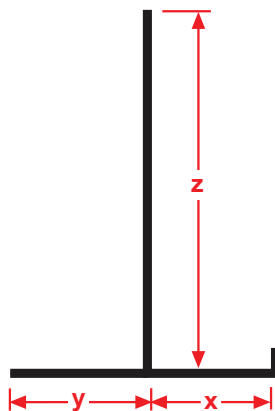
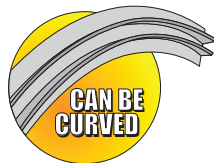
Provides a plaster stop/drip molding with an aesthetic reveal for window heads, tops of door frames and plate conditions where a drip edge is required. Available with 1/8" weep holes.



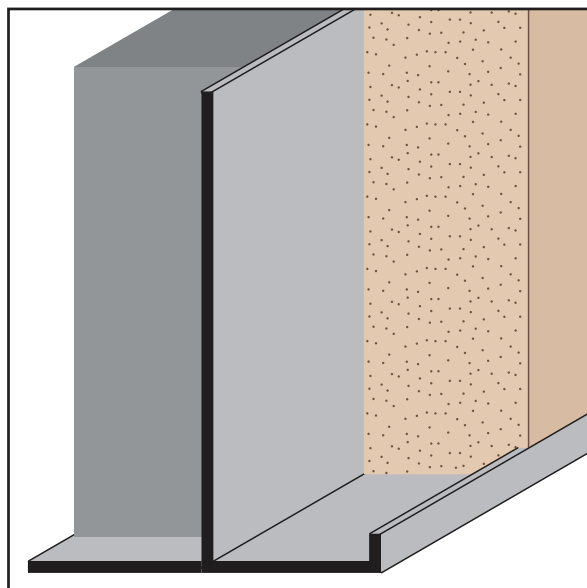
Length	X Size	Y Size
10'	3/4"	3/4"

FCM: Fascia Corner Molding

A plaster stop for fascia/soffit corner conditions that provides a reveal on the soffit portion.



Length	X Size	Y Size	Z Size
10'	3/4"	7/8"	2 3/16"



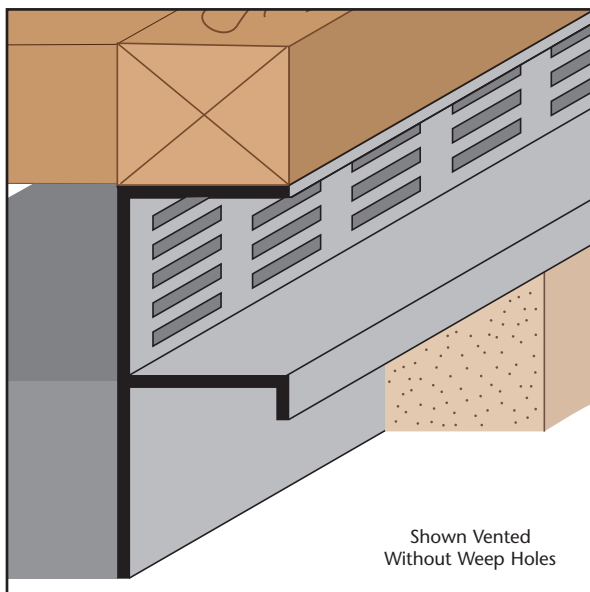
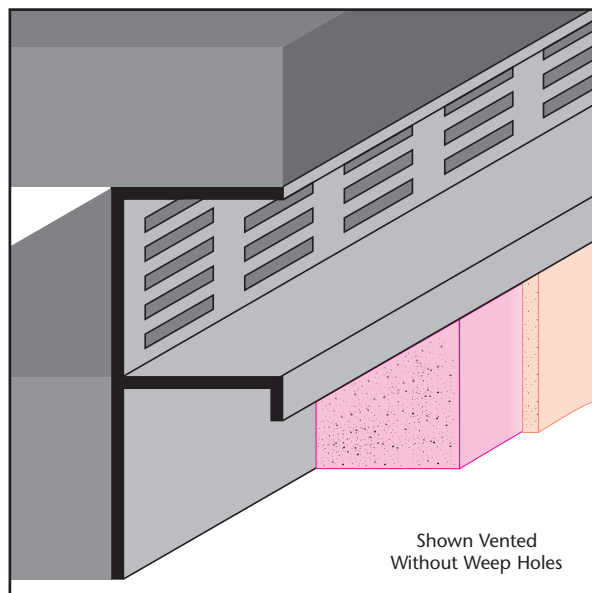
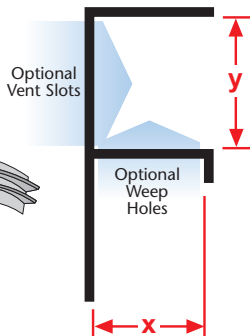
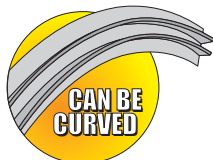
FDM: F Drywall Molding

- Available With 1/8" x 1" Vent Slots or No Vents

A drywall stop/control screed for drywall, used at the top or base of columns, the top of walls at the ceiling, or at the base to create a reveal. Also used at the top of windows to permit the continuation of a horizontal reveal at the window line. Available with 1/8" weep holes.

Length	X Size	Y Size
10'	1/2"	**1/2"
	*5/8"	3/4"
		1"
		1 1/2"
		2"
		3"
		4"

*Not available with a 1 1/2" Y size.
**Available on 1/2" reveal.

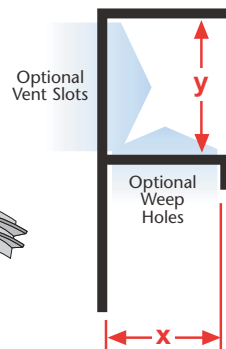
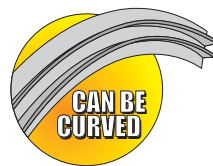


FPM: F Plaster Molding

- Available With 1/8" x 1" Vent Slots or No Vents

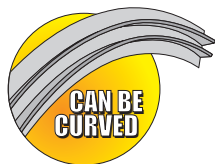
A plaster stop/control screed for conventional 3-coat stucco, used at the top or base of columns, the top of walls at the ceiling, or at the base to create a reveal. Also used at the top of windows to permit the continuation of a horizontal reveal at the window line. Available with 1/8" weep holes.

Length	X Size	Y Size
10'	3/4"	1/2"
		3/4"
		1"
		1 1/2"
		2"
		2 1/2"
		3"
		4"

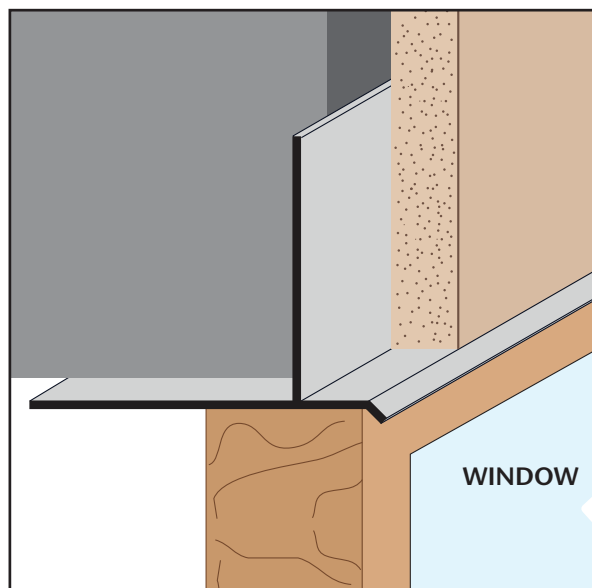
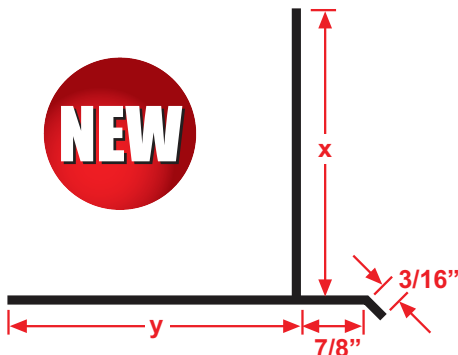


FRWDM: Facia/Recessed Window Drip Molding

A plaster stop for fascia/soffit corner conditions that provides a 3 1/8" reveal leg with a drip edge for recessed window conditions where a drip edge is required. Can be also be used when a caulking leg is required for backer rod and sealant.



Length	X Size	Y Size
10'	3"	3 1/8"

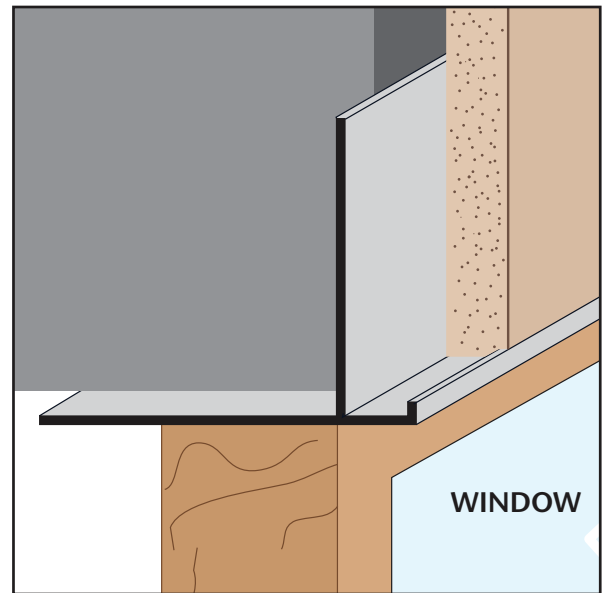


EXTRUDED ALUMINUM

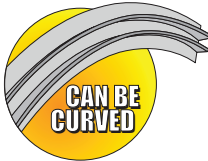


FRWM: Facia/Recessed Window Molding

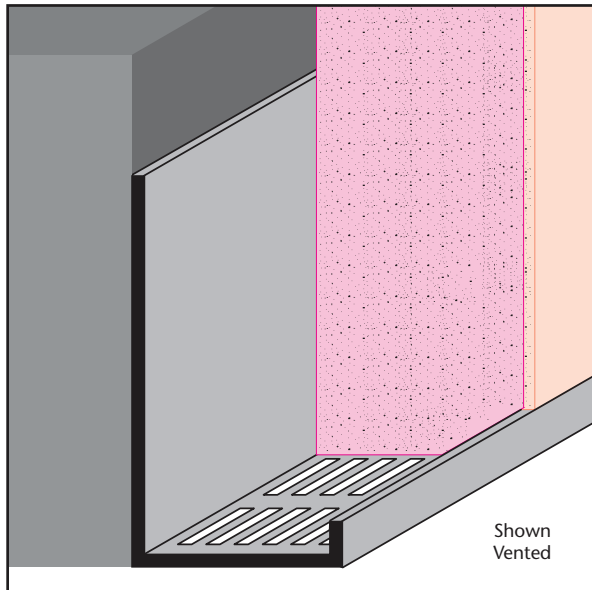
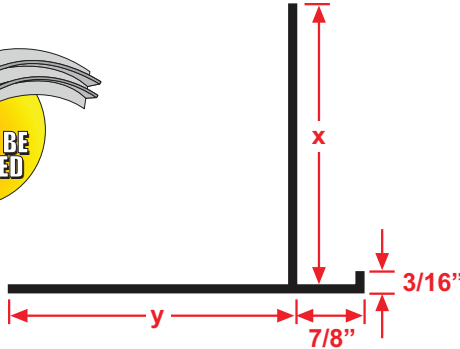
A plaster stop for fascia/soffit corner conditions that provides a 3 1/8" reveal leg for recessed windows. Can be used when a caulking leg is required for backer rod and sealant.



NEW

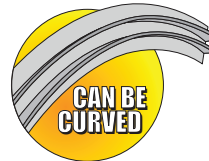


Length	X Size	Y Size
10'	3"	3 1/8"

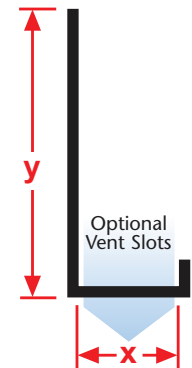


JDM: J Drywall Molding

- Available With 1/8" x 1" Vent Slots or No Vents
- A drywall version of the "J" molding. Gives a nice finished look to drywall terminations.

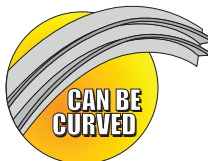


Length	X Size	Y Size
10'	1/2"	1 1/8"
	5/8"	



JPM: J Plaster Molding

- Available With 1/8" x 1" Vent Slots or No Vents
- A plaster stop/casing bead for conventional 3-coat stucco used in a variety of conditions that gives a nice finished look at all plaster terminations.



Length	X Size	Y Size
10'	3/4"	1 1/8"
	1"	2"
	1 1/2"	
	1 3/8"	

